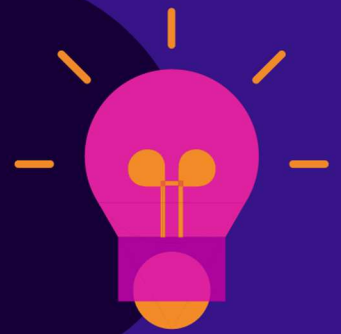




Royal College
of Midwives

Influence the future of **research**



Steering Group

The Steering Group is made up of women and birthing people, as individuals or as representatives from relevant organisations, midwives, a midwifery student and maternity support workers. The midwives bring with them their varied backgrounds and experiences across clinical, leadership, education and research roles, from across the UK.

Service users and service user organisation representatives

- Abi Gay, service user
- Nadia Higson, AIMS
- Katherine Letley and Mel Cooper (job share), Maternity Stream City of Sanctuary
- Amber Marshall, Big Birthas
- Laura-Rose Thorogood, LGBT Mummies

Midwifery and MSW representatives

- Laura Abbot, midwife, England
- Claire Bertorelli, midwife, Wales
- Racheal Crane, maternity support worker, England
- Sarah Esegbona-Adeigbe, midwife, England
- Christine Furber, midwife, England
- Melanie Harrington, student midwife, Northern Ireland
- Stephanie Heys, midwife, England
- Emma Lesley, maternity support worker, England
- Tom McEwan, midwife, Scotland
- Jenny McNeill, midwife, Northern Ireland
- Sian Rogers, midwife, England